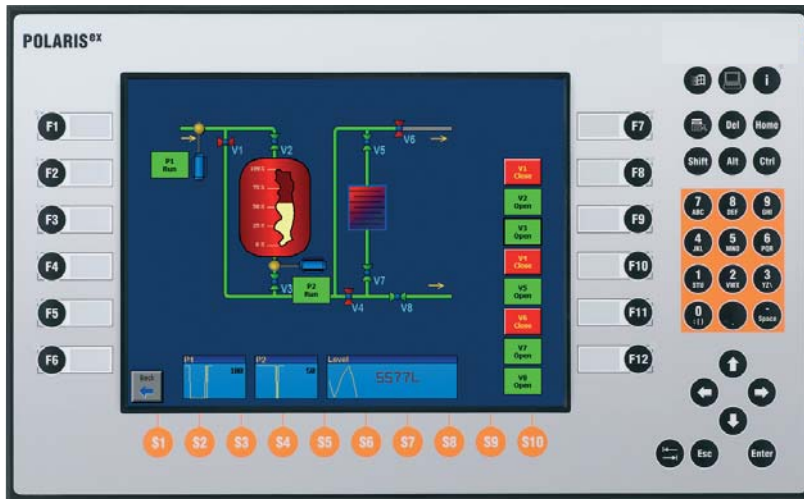




## POLARIS COMFORT POLARIS Touch Panel 10.4"



### POLARIS Touch Panel 10.4"

#### Features

- LED technology
- Higher screen resolution
- Touchscreen
- Processor up to 1.6 GHz
- Remote desktop solution
- Presentation of HTML pages
- Direct connection in hazardous areas
- Option of Windows® 7
- Integrated keyboard customisation

#### Description

The POLARIS Touch Panel 10.4" is an innovative further development of the POLARIS Panel PCs 10.4".

High-resolution displays with LED technology and touchscreen for intuitive as well as comfortable operation are available now in the standard variant.

State-of-the-art LED display technology ensures the optimum contrast even with a large viewing angle.

The proven LX800 offers sufficient computer capacity for presenting HTML pages or functioning as a remote client.

Of course, here too the user can work with the latest "BMS-Graf-pro" Runtime 7 under Windows® XP Embedded, for example for the transmission of projects over the Ethernet, the use of graphics lists or an integrated user administration.

For higher computer capacities there is an option of a highly efficient Intel® Atom™ with 1.6 GHz.

To allow optimum operation, the keyboard layout can be adjusted by software to suit the Windows®, BMS-Graf-pro 7, Siemens WinCC flexible®, RS View®

Allows a high-performance visual display and operation of the processes directly on site.

The front-panel fitting makes mounting easy. On request, the devices are also available as turn-key system solutions in a stainless steel enclosure for wall, floor or ceiling mounting.

An intrinsically safe USB interface is available for a USB Ex i memory stick. Intrinsically safe input devices can be connected also.

#### Explosion protection

##### Ex protection type

**ATEX** Ex II 2G Ex db eb qb [ib op pr] IIC T4  
Ex II 2D Ex tb IIIC T120°C IP 6X

##### Certification

IBExU 05 ATEX 1117 X

**IECEx** Ex db eb qb [ib] IIC T4  
Ex tb IIIC T120°C IP 6X

##### Certification

IECEx IBE 11.0007 X

##### Further approvals

INMETRO, GOST-R

##### Protection class

IP 65 (front)  
IP 54 (back)

#### Technical data

##### Construction

Front-panel fitting

##### Display

- 10.4" TFT graphic display
- 262,144 colours
- Resolution SVGA 800 x 600 pixels
- Brightness 400 cd/m<sup>2</sup>
- Visible surface approx. 211 x 158 mm
- Contrast 700:1
- Touchscreen (resistive)

##### Background lighting

- LED technology
- Service life approx. 50,000 hours (at +25 °C)

##### Computer capacity

- LX800 processor, 500 MHz
- Compact Flash 4 GB
- Intel® Atom™ N270, 1.6 GHz option
- 16 GB HD

##### Operating system

- Windows® XP Embedded (pre-installed)
- Windows® XP Professional (optional)

##### Keyboard (short-stroke keys)

- Alphanumeric key block
- 4 cursor keys
- 10 special keys
- 12 function keys able to be labelled with LEDs

##### Interfaces (basic version)

- 1 x Ex e Ethernet 100/10BaseT (option of optical fibres)
- 1 x Ex e RS422
- 1 x Ex i USB for Ex i memory stick
- 1 x Ex i PS/2 for intrinsically safe mouse

##### Optional interfaces

1 x Ex i Supply module for hand-held scanners

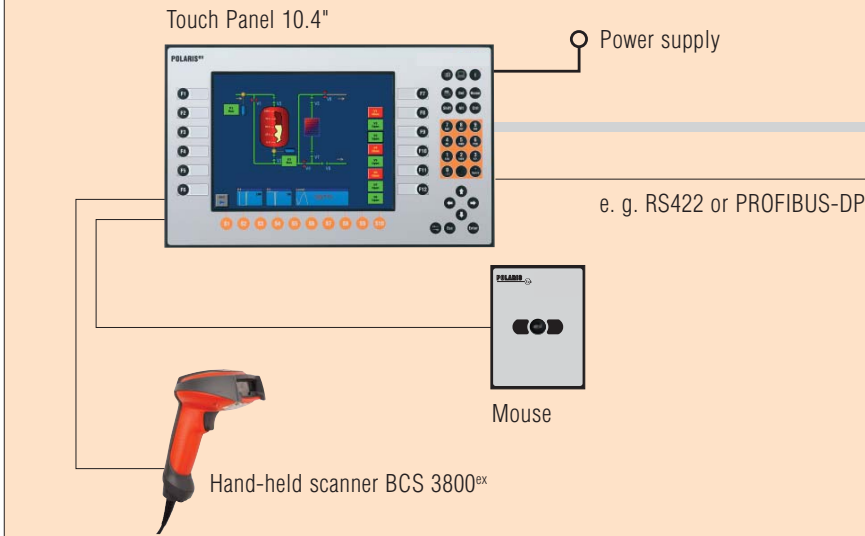
##### Dimensions (width x height x depth)

400 mm x 246 mm x approx. 130 mm

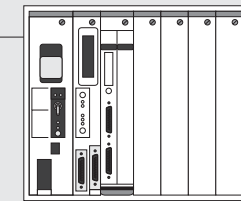


# POLARIS COMFORT POLARIS Touch Panel 10.4"

## Possible connection



## Safe area



PLC

e. g. connection to the control system, HTML server or remote server

### Wall cut-out

386 mm x 226 mm + 0.5 mm

### Weight

approx. 14 kg

### Power supply

DC 24 V ± 10 %

### Max. power consumption

$P_{max} < 30 \text{ W}$

### Permissible ambient temperatures

Storage -20 °C to +50 °C  
Operation 0 °C to +50 °C

### Variant

Operation -20 °C to +50 °C  
on request (without external heating)

### Relative air humidity

5 to 95 % non-condensing

### Vibration

0.7 G/1 mm; 5 Hz - 500 Hz pulse in all 3 axes

### Shock

15 G/11 ms pulse in all 3 axes

### Material

Front Polyester foil on anodised aluminium plate (conditionally UV-resistant)  
Back bichromated sheet steel

## Selection chart

Version	Interfaces	Code no.
Touch Panel 10.4"	RS422	<b>00</b>
	PROFIBUS-DP	<b>02</b>
	RS422, supply module for hand-held scanners	<b>04</b>
	PROFIBUS-DP, supply module for hand-held scanners	<b>06</b>
	RS232	<b>09</b>
	TTY	<b>11</b>
	RS232, supply module for hand-held scanners	<b>13</b>
	TTY, supply module for hand-held scanners	<b>15</b>
	PROFIBUS-DP, Ex d-USB	<b>33</b>
	Further Interface combinations on request	<b>XX</b>

➔ **Complete order no. 17-71V1-90**  **/X000**

Please insert correct code.

Technical data subject to change without notice.

You will find the accessoires with order details on the accessories pages.